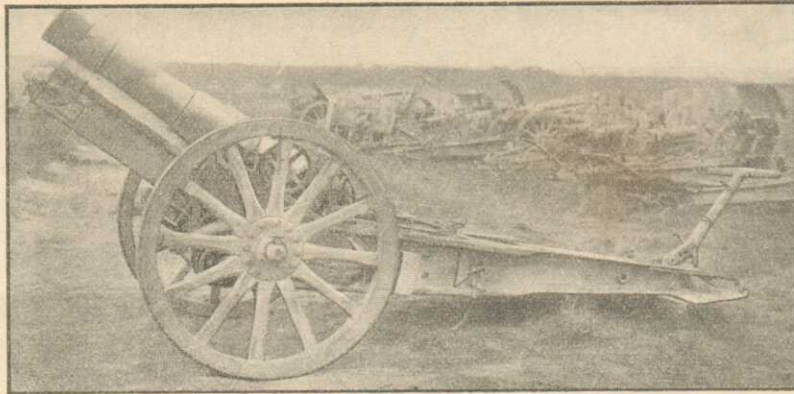
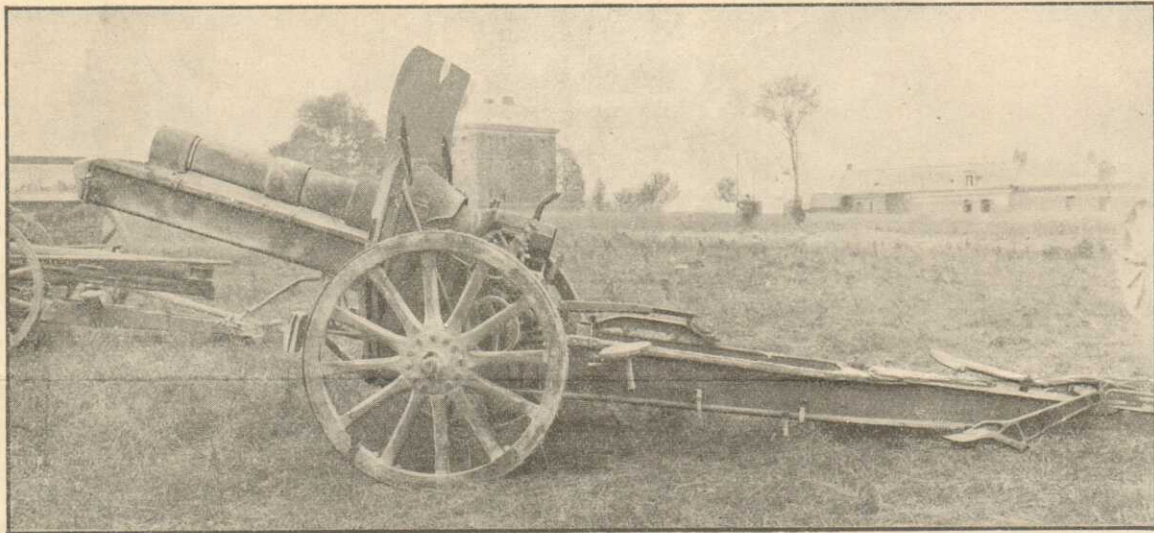


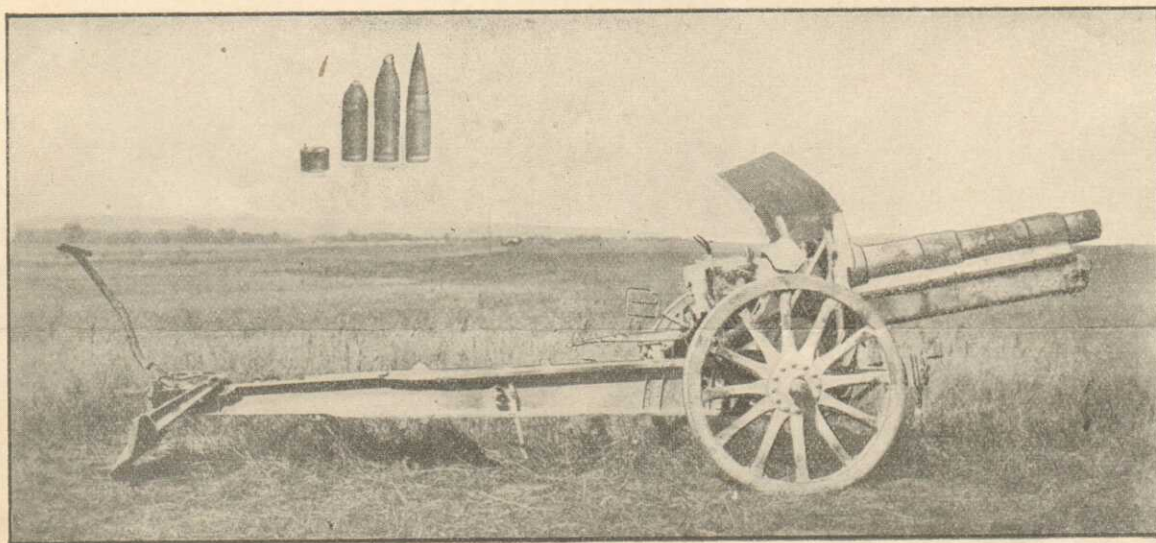
PHOTOGRAPHS OF
SERIAL
Medium and Heavy



1902 15-cm. Howitzer (*s. F.H. 02*).



1913 15-cm. Howitzer (*s.F.H. 13*).



Long 1913 15-cm. Howitzer (*lg.s.F.H. 13*).

General Staff (Intelligence),
General Headquarters.

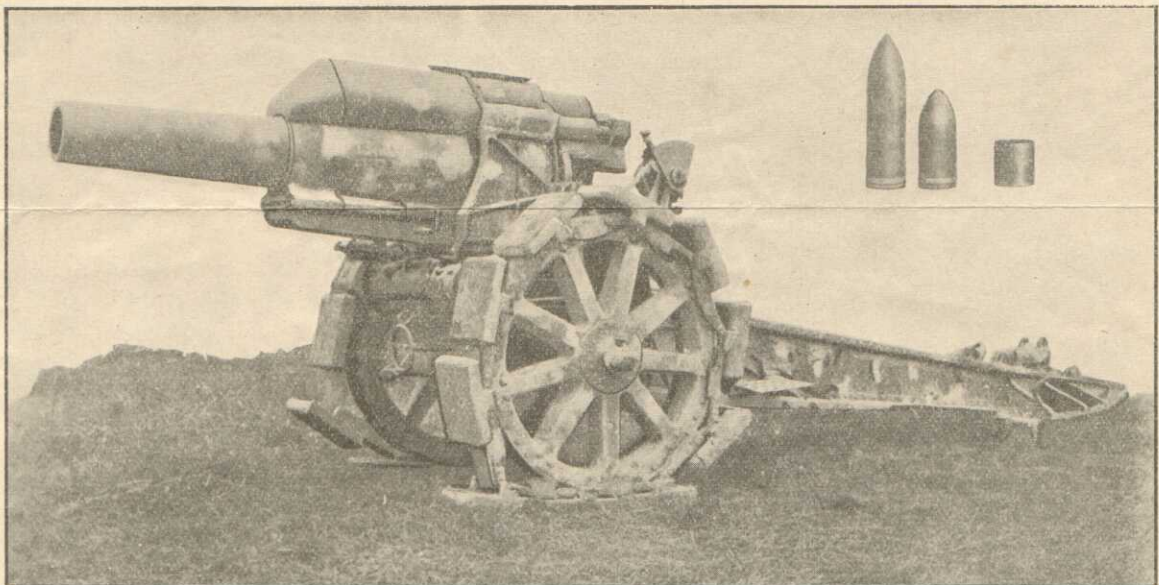
18th September, 1918.

Field Howitzers.

COMPARISON OF 15-CM. HOWITZERS.

| | 1902 howitzer. | 1913 howitzer. | Long 1913 howitzer. |
|--|--|-----------------------------------|----------------------------|
| Calibre ... | 14.97 cm. (5.89 in.) | 14.97 cm. (5.89 in.) | 14.97 cm. (5.89 in.) |
| Overall length of piece ... | 12 calibres = 5 ft. 9½ in. | 14 calibres = 6 ft. 10½ in. | 17 calibres = 8 ft. 4½ in. |
| Recuperator ... | Spring recuperator. | Either spring or air recuperator. | Air recuperator. |
| Maximum elevation on carriage ... | 42° | 45° | 45° |
| Amount of traverse ... | 3° 56' | about 4° | about 4° |
| Weight of piece ... | 15¾ cwt. | 15½ cwt. | 16¼ cwt. |
| Weight of howitzer in action | 39¼ cwt. | — | 43 cwt. |
| Transport ... | All three types were designed for horse-drawn transport, but, owing to the shortage of horses, may be sometimes hauled by lorries. | | |
| Number of charges ... | 1-6 | 1-7 | 1-8 |
| Weight of shell ... | 92 lbs. | 92 lbs. | 92 lbs. |
| Maximum ranges :— | | | |
| With 2 c.r.h. shell ... | 8,147 yds. (Charge No. 6) | 9,296 yds. (Charge No. 7) | 9,296 yds. (Charge No. 8) |
| With 7 c.r.h. shell with false cap ... | — | — | 9,624 yds. |

NOTE.—All three howitzers fire the same ammunition, except as regards the super-charges and the 7 c.r.h. shell with false cap (15 cm. Gr. 14 Haube). The latter is only fired from the long 1913 howitzer and is not fired with Charges 1-7.



New 21-cm. Howitzer or "Long Mortar" (lg. Mrs.).

COMPARISON OF 21-CM. HOWITZERS OR "MORTARS."

The new long 21-cm. howitzer or "Long Mortar" (lg. Mrs.) differs from the former pattern or "Mortar" (Mrs.) by the length of the piece and a corresponding increase in range of 875 yards. Both howitzers fire the same ammunition. Streamline shell and shell with false caps are not in use.

| | "Mortar." | "Long Mortar." |
|--|--|-----------------------------------|
| Calibre ... | 21.1 cm. (8.3 in.) | 21.1 cm. (8.3 in.) |
| Overall length of piece ... | 12 calibres = 8 ft. 4 in. | 15 calibres = 10 ft. 3 in. |
| Recuperator ... | Air recuperator, constant recoil. | Air recuperator, constant recoil. |
| Maximum elevation on carriage ... | + 70° | + 70° |
| Amount of traverse ... | 4° | 4° |
| Weight of piece ... | 51¾ cwt. | 52½ cwt. |
| Weight of howitzer in action | 7 tons 5 cwt. | About 8 tons |
| Weight of piece on travelling carriage | 4 tons 2 cwt. | — |
| Weight of carriage limbered up | 4 tons 8 cwt. | — |
| Transport ... | Both howitzers are designed for horse-drawn transport, the piece being carried on a special wagon. | |
| Number of charges ... | 8 | 8 |
| Weight of shell ... | The long shell weighs 265 lbs. and the short shell 185 lbs. | |
| Maximum ranges :— | | |
| 2 c.r.h. long shell ('96 n/A.) ... | 10,280 yds. | 11,155 yds. |
| 1.5 c.r.h. short shell (1914) ... | 9,952 yds. | 10,280 yds. |